



**WILKENING**  
*Fireplace*

# Custom Sealed Fireplace Doors

Grand Seal door with Ancient Iron trim and wood handles

**Warming the Heart of Your Home Since 1973**

## Hand crafted to your specifications

Each fireplace is unique. Let our experienced staff hand craft one of our three designs with a custom fit and finish to meet your specifications for years of trouble free use.



Intertek

### Grand Seal

#### *Super sealed construction*

- Designed for closed door use on high heat output fireplaces
- Most durable option
- All ¼" steel construction for maximum durability
- Optional fire screen available

Grand Seal door with black finish, Prairie trim, wood handles and optional swinging screen

# Supreme



## Heavy duty sealed door

- Fully sealed construction
- Designed for closed door use with regular heat circulating and radiant heat fireplaces
- Optional handle designs to choose from
- Optional fire screen available

Arched Supreme door with black finish and nickel spring handles



## What is a sealed fireplace door?

Sealed fireplace doors utilize high heat, continuous woven gaskets to seal the operable door sections to the frame and the glass panels in place to eliminate air flow.

- Eliminates excess air flow and cold drafts
- Allows control of the fire
- Minimizes fireplace odor when not in use
- Reduces heating and cooling costs
- Eliminates back smoking into the room at negative pressure levels (in excess of -25 PA) allowing traditional wood burning fireplaces in areas of the country with the most stringent codes





## Fullview

### *Regular duty fireplace door*

- Improved seal minimizes excess air loss
- Glass panels maximize the fire view
- Designed to seal off the fireplace when you are done burning with the doors open
- Optional fire screen available

Fullview door with Swedish Steel finish and nickel spring handles

## Maximum fire view

High heat, woven gaskets seal the perimeter of each glass section, allowing the glass to meet in the center to maintain an uninterrupted view of the fire.





## Top safety rating

All three door styles are tested to UL 907 and listed with Intertek testing when ordered with ceramic glass and wood handles. This safety rating assures you that our products are safe for use with your masonry installed fireplace.

## Room air inlet

Our optional room air inlet at the base of the door is unique. It causes incoming air to be directed up vertically against the glass to minimize smoke accumulation when operating with the doors closed. This keeps your glass clean longer and improves your view of the fire.



Swinging



Sliding

## Screen types

The sliding screen is an industry standard and can be moved to the sides for viewing the fire when the doors are closed. Our swinging screens are more durable than sliding screens and can be removed for closed door use.

# Features

## Standard features

High heat  
black satin  
finish

Clear  
tempered  
safety glass



Positive contact  
cam activated latch

*Clearview* room air  
inlet that controls  
the burning rate  
of the fire and  
assists in keeping  
the glass panels  
free from smoke

2" deep  
mounting  
flange



## Handle styles

Spring or wood block handles can be top or bottom mounted on Supreme or Fullview doors. Grand Seal doors use wood block handles that are bottom mounted.



Black Spring  
Handle



Brass Spring  
Handle



Nickel Spring  
Handle



Stained Wooden  
Block Handle



Black Painted  
Wooden Block  
Handle

## Glass options

The standard glass is a clear tempered safety glass, which is the industry standard and rated to 600 degrees Fahrenheit. You can upgrade the clear glass to a bronze tinted or smoked grey tempered safety glass to highlight your door. Optional ceramic glass, rated to 1400 degrees, is recommended for all closed door use. Ceramic glass also improves the heat transfer from the fire into the room as the radiant heat energy easily passes through this material.



Standard Clear  
Tempered Safety Glass



Bronze Tinted  
Tempered Safety Glass



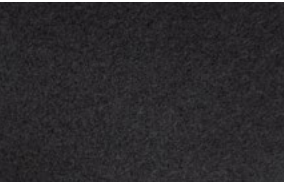
Smoked Grey  
Tempered Safety Glass



Ceramic  
Glass

## Features and finishes

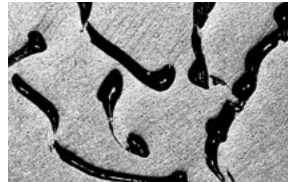
Plated finishes are only available for the swinging section of the door and the frame would need to have an alternate finish. Hammered finishes are not available on Fullview swing sections but can be done on the frame.



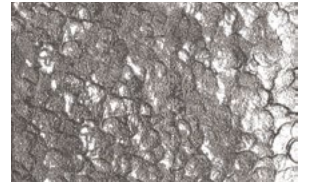
Black



Brushed Steel



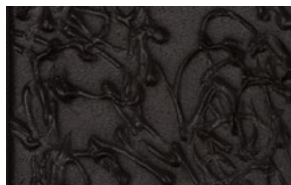
Swedish Steel



Hammered Steel  
with Clear Lacquer



Hammered Steel with  
Black Painted Finish



Ancient Iron



Prairie

Custom High Heat paint colors are also available – ask your dealer for information.



Fullview door with Ancient Iron trim and color matched spring handles



Supreme Peninsula door with black spring handles

## Recommendations

- Each door will be built to overlap the masonry opening by one inch on the sides and top unless you specify differently.
- Your custom built door will be as accurate as the measurements provided. **Use a rigid tape or metal ruler for exact measurements.**
- A mounting flange will protrude into your fireplace opening 2 inches and be sized to allow a 1/4" space between it and your masonry opening. This area is used to pack fiberglass insulation into it to seal the frame to the masonry face. Holes must be site drilled through this flange into the masonry for attachment.
- A high temperature silicone or refractory caulking can be used to fill any voids between the door frame and your fireplace.

**Our sealed custom fireplace doors are for use only on masonry installed fireplaces. If you are unsure if your fireplace is a masonry system, consult with your dealer or chimney professional.**

Manufactured by:



9608 State 371 N.W.  
Walker, MN 56484

Your dealer is:

Version 0426