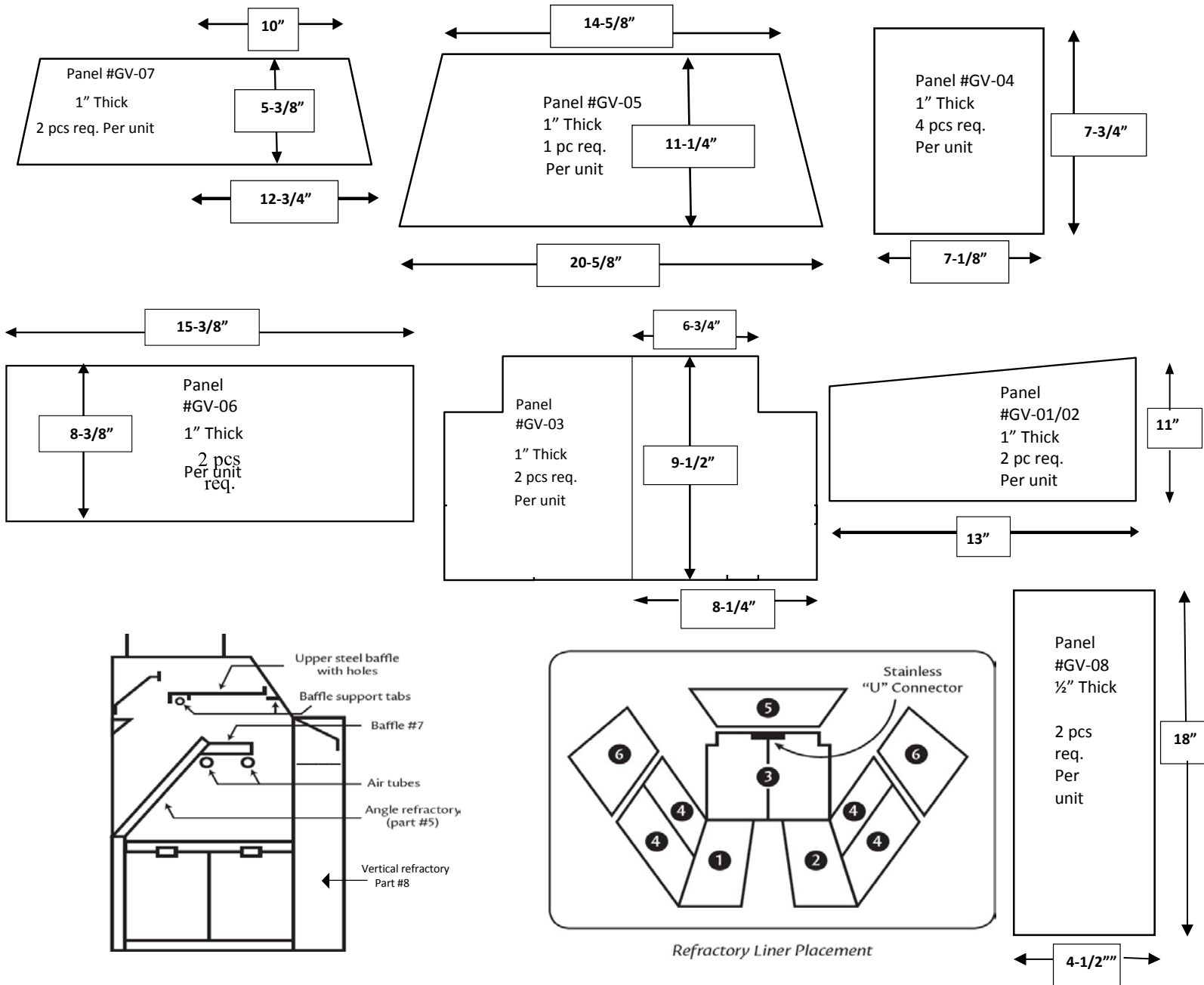


GRANVIEW REFRACTORY INSTALLATION GUIDE



There are 13 refractory panels. The refractory panels can be installed either side out.

1. **Refractory panels #GV-06 (top sides)** – Install above side square air tubes.
2. **Refractory panels #GV-01/02 (bottoms)** – Place evenly spaced in the bottom of the unit.
3. **Refractory panels #GV-03 (backs)** – Position the two-piece back panel in place using the stainless steel "U" shaped clip to connect them on the top center edge.
4. **Refractory panels #GV-04 (sides)** – These panels are placed behind the tabs welded on the steel side tubes in the firebox. Slide them back so they are tight against the back panels.
5. **Refractory panel #GV-05 (angle)** – Place the angle panel over the top edge of the air tubes and slip into place allowing it to rest on the top edge of the back panels.
6. **Refractory panels #GV-07 (baffles)** – Place above stainless steel air tube all the way to the back and evenly spaced from side to side. Should be small gap on far right & left sides.
7. **Refractory panels #GV-08 (vertical side)** – should be placed just inside the opening on both the right and left sides. These pieces are held in place with a clip.

See pages 14 & 16 of the installation manual for more information. Call Wilkening at 800-367-7976 with any questions.