



# *The* GranView

*High Efficiency Zero Clearance Fireplace*



Ancient Iron Door and Lower Louver

**WILKENING**  
*Fireplace*



# Maximum Fire View

*With a 33" W x 17 ½" H opening, the GranView has the largest fire view of any wood burning fireplace in its class. This window of flame provides a beautiful focal point for any room, without any unsightly internal obstructions.*

## 95.4% COMBUSTION EFFICIENT DESIGN

While you're relaxing in the warmth of the fire, the GranView is hard at work burning the smoke that is wasted by normal fireplace designs. This clean-burning fireplace limits hydrocarbon emissions, reducing creosote accumulation in the chimney.

## FLEXIBLE DESIGN OPTIONS

The elegant style of our arched or rectangular doors can be enhanced with optional nickel plating or Ancient Iron to create a fireplace design with unlimited decorating options. Choose the look you desire by finishing your installation with stone, tile, stucco or any manufactured facing material to create the fireplace of your dreams.

## UNIQUE AIR SUPPLY SYSTEM

The GranView incorporates a unique combustion air supply system that directs outside air to every supply port inside the fire chamber. By directly connecting the combustion air from outside the home to the unit, heated room air is not lost up the chimney when you are burning a fire. "Fireplace odor" or cold drafts will never invade your home when the fireplace is not in use.

A specially designed air wash provides ample flow of incoming air to continually sweep the glass clean and create a dramatic flame pattern.

## ZERO CLEARANCE INSTALLATION

Our zero clearance surround provides easy, cost effective installation. A special foundation or support is not required to install the fireplace.

## DOOR OPTIONS



Rectangular  
Black Door



Prairie Door



Ancient Iron Door

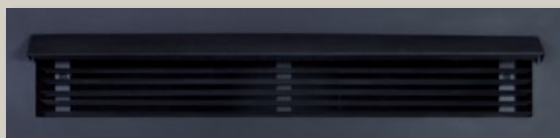


Rectangular  
Nickel Door

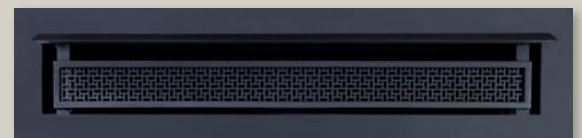


Arched Black Door

## LOUVER AND GRILL OPTIONS



Traditional Louver



Designer Louver





GranView with Prairie Door and Designer Louvers



GranView with Clean Face Option and Gravity Vent Kit

## DOOR OPTIONS



Arched Prairie Door



Arched Ancient Iron



Arched Nickel Door



Taconite Trim for Rectangular or Arched Ancient Iron

## LOUVER AND GRILL OPTIONS

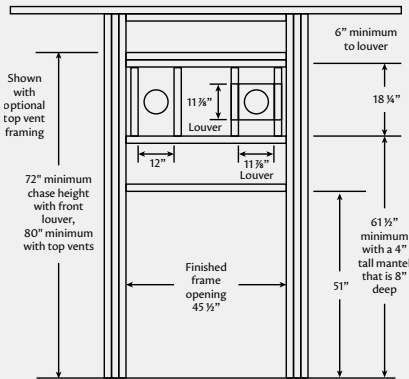
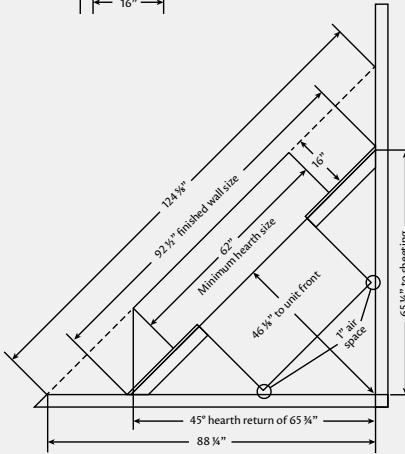
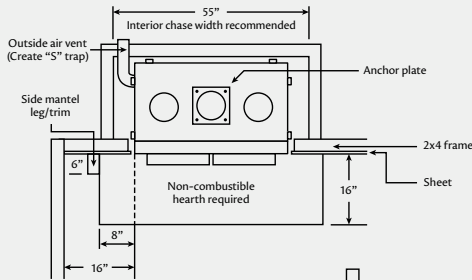
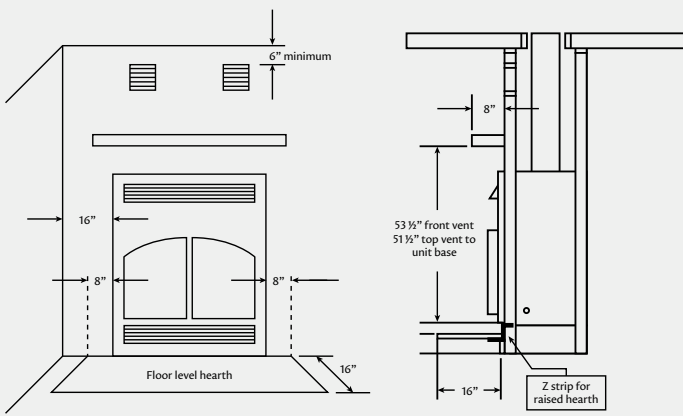


Designer Grill



Screen for Open Burning





GranView with Arched Nickel Door and traditional louvers

### SPECIFICATIONS

Firebox capacity	4.2 cu. ft.
Emissions	2.72 g/kg
Overall efficiency	72%
Log length	24" average
Framing dimensions	45 1/2" W x 51" H x 24" D
Chimney size	8" diameter
Weight	685 lbs.
Convection air circulation of 200 cu. ft. / minute. Blowers optional.	
Optional heat ducting methods.	
Mobile home approved.	
Complies with EPA requirements as a fireplace.	

INCLUDED	OPTIONAL FEATURES
Main firebox/heat exchanger	Air circulation louvers in Traditional, Designer and Ancient Iron style
Air tight door with ceramic glass *	Dual heat vent kit
Five foot outside air kit and vent	Multiple blower designs
Super reflective inner liner	Heat transfer kit
	Masonry facing kit for veneer finishes
	Clean face kit
	Screen

\* Choose from multiple door designs



9608 State 371 N.W., Walker, MN 56484

[www.wilkeningfireplace.com](http://www.wilkeningfireplace.com)

[wilkenfp@eot.com](mailto:wilkenfp@eot.com) | 800-367-7976

Photography by Lance White - [www.lancewhitephotography.com](http://www.lancewhitephotography.com)  
 Brochure Design by ColorForge Creative - [www.colorforge.com](http://www.colorforge.com)

YOUR DEALER IS: